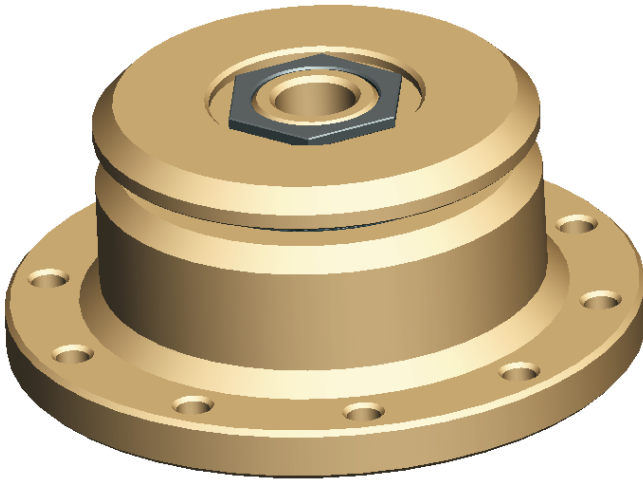


TYPE RM(E) 1.636A0



Technical Characteristics:

- Natural Frequency = 12 ~ 18Hz
- Ideal decrease of height = 3mm
- Maximum decrease of height = 10mm
- Maximum capacity of shock absorption = 5G
- Zeta = 0,50
- Initial stiffness = 400Kgf/mm
- Average stiffness = 1250Kgf/mm
- Maximum stiffness = 3400Kgf/mm

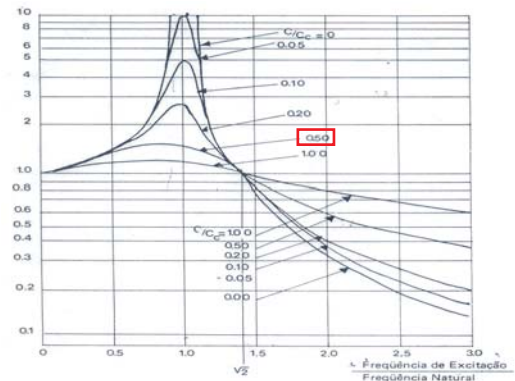
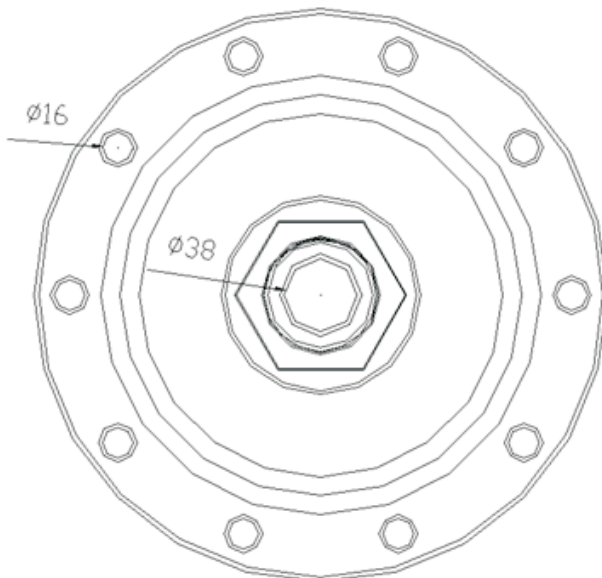
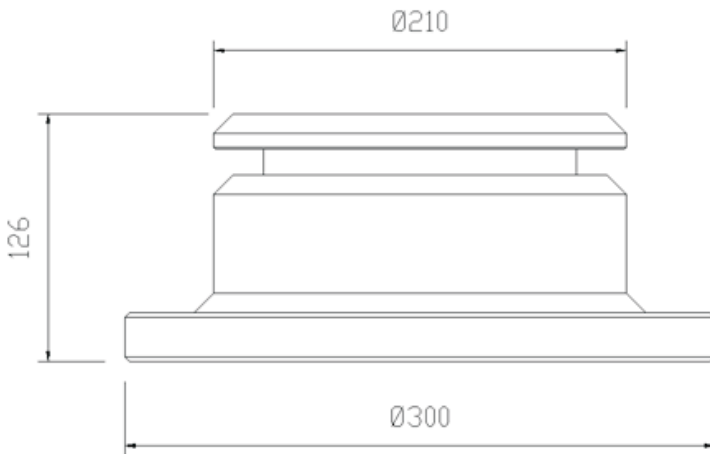
Obs.: The stiffness difference occurs in according the automatic stainless steel mesh locking.

Constructive information:

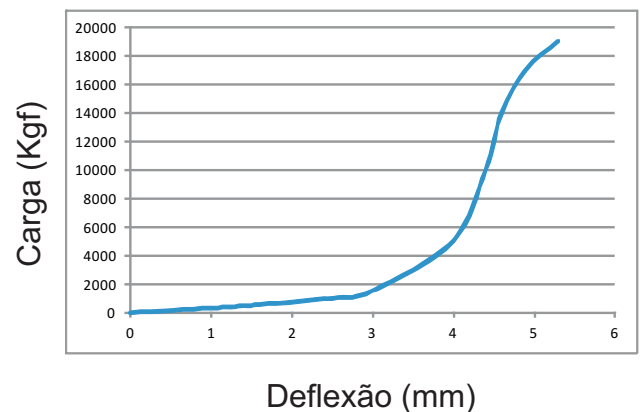
- Inferior base plate in stainless steel A316
- Mesh of inox steel for reduction and damper
- Nuts and washers in satinless steel A316
- Approximate Weight: 12Kg

Recommended use:

- Naval use in the suport os pipes (exhaust gas piping) that possess degrees of freedom in the six axes of movement (x, y, z, xx, yy and zz).
- Offshore structures.
- Work temperature up to 300°C.
- Saturated atmospheres of oil.



Curva "Carga x Deflexão"



RISASPRINGS AMORTECEDORES DE VIBRAÇÃO LTDA.

Vendas: (55 11) 2459-3884 / 2453-5592 / 2453-2234 / 5572-7711

site: www.risasprings.com.br // e-mail: vendas@risasprings.com.br